

ALL-NEW 2020 EXPLORER



VIN 343

MODEL

2020 Explorer XLT RWD

EXTERIOR COLOR

Blue Metallic

INTERIOR COLOR

Ebony ActiveX seats

ENGINE

2.3-liter I-4 EcoBoost

TRANSMISSION

10-speed automatic

OPTIONS

- Equipment group 202A
 - 8-way power passenger seats (includes power lumbar and power recline)
 - ActiveX™ seating material
 - LED fog lamps with skid plate elements, silver-painted front
 - Remote start system
- Ford Co-Pilot360 Assist+
- Comfort package
 - First and second row heated seats
 - Heated steering wheel
 - Windshield wiper de-icer

AVAILABILITY

Summer 2019

BASE MSRP

\$36,375

PRICE AS EQUIPPED

\$43,120*

**Includes \$1,095 destination and delivery*



HIGHLIGHTS



- 3.0-liter EcoBoost® engine produces 365 horsepower and 380 lb.-ft. of torque
- Rear-wheel-drive architecture enables improved towing capability, up to 5,600 pounds when properly equipped
- Selectable drive mode system features seven settings for normal, sport, trail, slippery, tow/haul, eco and deep snow/sand conditions



- All-new Explorer retains classic design cues that have made it the best-selling SUV ever
- 2020 Ford Explorer features the model's most comfortable, quietest cabin ever
- Explorer Platinum includes a standard twin-panel moonroof
- Explorer offers seven wheel designs, including 21-inch premium aluminum wheels available on Platinum models
- Michelin Selfseal® tires are standard on Platinum models



- A 14-speaker B&O premium audio system and a wireless phone charging pad are standard on Platinum models
- An available 12.3-inch all-digital cluster displays important vehicle information and uses 3D animated graphics to change display to show drive mode selections
- A suite of Ford Co-Pilot360™ driver-assist technologies is standard across the Explorer lineup
- Standard FordPass Connect™ gives 4G LTE Wi-Fi access to the entire vehicle

ALL-NEW 2020 EXPLORER



VIN 344

MODEL

2020 Explorer XLT RWD

EXTERIOR COLOR

Blue Metallic

INTERIOR COLOR

Ebony ActiveX seats

ENGINE

2.3-liter I-4 EcoBoost

TRANSMISSION

10-speed automatic

OPTIONS

- Equipment group 202A
 - 8-way power passenger seats (includes power lumbar and power recline)
 - ActiveX™ seating material
 - LED fog lamps with skid plate elements, silver-painted front
 - Remote start system
- Class III trailer tow package
Note: Contains cargo area management system
- Ford Co-Pilot360 Assist+

AVAILABILITY

Summer 2019

BASE MSRP

\$36,375

PRICE AS EQUIPPED

\$43,115*

*Includes \$1,095 destination and delivery



HIGHLIGHTS



- 3.0-liter EcoBoost® engine produces 365 horsepower and 380 lb.-ft. of torque
- Rear-wheel-drive architecture enables improved towing capability, up to 5,600 pounds when properly equipped
- Selectable drive mode system features seven settings for normal, sport, trail, slippery, tow/haul, eco and deep snow/sand conditions



- All-new Explorer retains classic design cues that have made it the best-selling SUV ever
- 2020 Ford Explorer features the model's most comfortable, quietest cabin ever
- Explorer Platinum includes a standard twin-panel moonroof
- Explorer offers seven wheel designs, including 21-inch premium aluminum wheels available on Platinum models
- Michelin Selfseal® tires are standard on Platinum models



- A 14-speaker B&O premium audio system and a wireless phone charging pad are standard on Platinum models
- An available 12.3-inch all-digital cluster displays important vehicle information and uses 3D animated graphics to change display to show drive mode selections
- A suite of Ford Co-Pilot360™ driver-assist technologies is standard across the Explorer lineup
- Standard FordPass Connect™ gives 4G LTE Wi-Fi access to the entire vehicle

ALL-NEW 2020 EXPLORER



VIN 345

MODEL

2020 Explorer XLT RWD

EXTERIOR COLOR

Blue Metallic

INTERIOR COLOR

Ebony ActiveX seats

ENGINE

2.3-liter I-4 EcoBoost

TRANSMISSION

10-speed automatic

OPTIONS

- Equipment group 202A
 - 8-way power passenger seats (includes power lumbar and power recline)
 - ActiveX™ seating material
 - LED fog lamps with skid plate elements, silver-painted front
 - Remote start system
- Class III trailer tow package
 - Note: Contains cargo area management system
- Ford Co-Pilot360 Assist+

AVAILABILITY

Summer 2019

BASE MSRP

\$36,375

PRICE AS EQUIPPED

\$43,115*

**Includes \$1,095 destination and delivery*



HIGHLIGHTS



- 3.0-liter EcoBoost® engine produces 365 horsepower and 380 lb.-ft. of torque
- Rear-wheel-drive architecture enables improved towing capability, up to 5,600 pounds when properly equipped
- Selectable drive mode system features seven settings for normal, sport, trail, slippery, tow/haul, eco and deep snow/sand conditions



- All-new Explorer retains classic design cues that have made it the best-selling SUV ever
- 2020 Ford Explorer features the model's most comfortable, quietest cabin ever
- Explorer Platinum includes a standard twin-panel moonroof
- Explorer offers seven wheel designs, including 21-inch premium aluminum wheels available on Platinum models
- Michelin Selfseal® tires are standard on Platinum models



- A 14-speaker B&O premium audio system and a wireless phone charging pad are standard on Platinum models
- An available 12.3-inch all-digital cluster displays important vehicle information and uses 3D animated graphics to change display to show drive mode selections
- A suite of Ford Co-Pilot360™ driver-assist technologies is standard across the Explorer lineup
- Standard FordPass Connect™ gives 4G LTE Wi-Fi access to the entire vehicle

ALL-NEW 2020 EXPLORER



VIN 361

MODEL

2020 Explorer XLT 4WD

EXTERIOR COLOR

Blue Metallic

INTERIOR COLOR

Ebony ActiveX seats

ENGINE

2.3-liter I-4 EcoBoost

TRANSMISSION

10-speed automatic

OPTIONS

- Equipment group 202A
 - 8-way power passenger seats (includes power lumbar and power recline)
 - ActiveX™ seating material
 - LED fog lamps with skid plate elements, silver-painted front
 - Remote start system
- Ford Co-Pilot360 Assist+
- Comfort package
 - First and second row heated seats
 - Heated steering wheel
 - Windshield wiper de-icer

AVAILABILITY

Summer 2019

BASE MSRP

\$38,675

PRICE AS EQUIPPED

\$45,420*

**Includes \$1,095 destination and delivery*



HIGHLIGHTS



- 3.0-liter EcoBoost® engine produces 365 horsepower and 380 lb.-ft. of torque
- Rear-wheel-drive architecture enables improved towing capability, up to 5,600 pounds when properly equipped
- Selectable drive mode system features seven settings for normal, sport, trail, slippery, tow/haul, eco and deep snow/sand conditions



- All-new Explorer retains classic design cues that have made it the best-selling SUV ever
- 2020 Ford Explorer features the model's most comfortable, quietest cabin ever
- Explorer Platinum includes a standard twin-panel moonroof
- Explorer offers seven wheel designs, including 21-inch premium aluminum wheels available on Platinum models
- Michelin Selfseal® tires are standard on Platinum models



- A 14-speaker B&O premium audio system and a wireless phone charging pad are standard on Platinum models
- An available 12.3-inch all-digital cluster displays important vehicle information and uses 3D animated graphics to change display to show drive mode selections
- A suite of Ford Co-Pilot360™ driver-assist technologies is standard across the Explorer lineup
- Standard FordPass Connect™ gives 4G LTE Wi-Fi access to the entire vehicle

ALL-NEW 2020 EXPLORER



VIN 362

MODEL

2020 Explorer XLT 4WD

EXTERIOR COLOR

Blue Metallic

INTERIOR COLOR

Ebony ActiveX seats

ENGINE

2.3-liter I-4 EcoBoost

TRANSMISSION

10-speed automatic

OPTIONS

- Equipment group 202A
 - 8-way power passenger seats (includes power lumbar and power recline)
 - ActiveX™ seating material
 - LED fog lamps with skid plate elements, silver-painted front
 - Remote start system
- Ford Co-Pilot360 Assist+
- Class III trailer tow package

Note: Contains cargo area management system

- Comfort package
 - First and second row heated seats
 - Heated steering wheel
 - Windshield wiper de-icer

AVAILABILITY

Summer 2019

BASE MSRP

\$38,675

PRICE AS EQUIPPED

\$46,130*

*Includes \$1,095 destination

HIGHLIGHTS



- 3.0-liter EcoBoost® engine produces 365 horsepower and 380 lb.-ft. of torque
- Rear-wheel-drive architecture enables improved towing capability, up to 5,600 pounds when properly equipped
- Selectable drive mode system features seven settings for normal, sport, trail, slippery, tow/haul, eco and deep snow/sand conditions



- All-new Explorer retains classic design cues that have made it the best-selling SUV ever
- 2020 Ford Explorer features the model's most comfortable, quietest cabin ever
- Explorer Platinum includes a standard twin-panel moonroof
- Explorer offers seven wheel designs, including 21-inch premium aluminum wheels available on Platinum models
- Michelin Selfseal® tires are standard on Platinum models



- A 14-speaker B&O premium audio system and a wireless phone charging pad are standard on Platinum models
- An available 12.3-inch all-digital cluster displays important vehicle information and uses 3D animated graphics to change display to show drive mode selections
- A suite of Ford Co-Pilot360™ driver-assist technologies is standard across the Explorer lineup
- Standard FordPass Connect™ gives 4G LTE Wi-Fi access to the entire vehicle



ALL-NEW 2020 EXPLORER HYBRID



VIN 367

MODEL

2020 Explorer LT Hybrid 4WD

EXTERIOR COLOR

Atlas Blue

INTERIOR COLOR

Sandstone leather

ENGINE

3.3-liter hybrid

TRANSMISSION

10-speed modular hybrid

OPTIONS

- Equipment group 310A
 - 20" hand polished aluminum wheels
 - Self-sealing P255/55R20 all-season tires (4x4 only)
 - Active noise cancellation
 - High-series brakes
 - Mini spare tire
 - Twin-panel moonroof
 - Class III trailer tow package
- Note: Contains cargo area management system

AVAILABILITY

Summer 2019

BASE MSRP

\$52,280

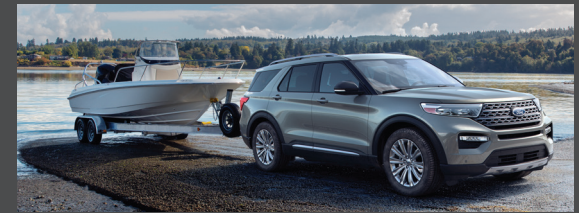
PRICE AS EQUIPPED

\$57,975*

*Includes \$1,095 destination and delivery



- 3.3-liter hybrid engine projected to return an EPA-estimated range of more than 500 miles per tank in rear-wheel-drive models
- Hybrid engine produces 318 system horsepower and 322 lb.-ft. of torque
- Hybrid battery is mounted below the second-row seats rather than stored in the cargo area
- Explorer Hybrid introduces a new 10-speed modular hybrid transmission



- All-new Explorer Hybrid retains classic design cues that have made Explorer the best-selling SUV ever, while adding a more sloping roofline and shorter front overhang
- 2020 Ford Explorer Hybrid features the model's most comfortable, quietest cabin ever
- Michelin Selfseal® tires are standard on Hybrid models



- A 14-speaker B&O premium audio system and a wireless phone charging pad are standard on Hybrid models
- Hybrid models feature active noise cancellation to quiet the sound of the gas engine
- An available 12.3-inch all-digital cluster displays important vehicle information and uses 3D animated graphics to change display to show drive mode selections
- A suite of Ford Co-Pilot360™ driver-assist technologies is standard across the Explorer lineup
- Standard FordPass Connect™ gives 4G LTE Wi-Fi access to the entire vehicle



ALL-NEW 2020 EXPLORER HYBRID



VIN 363

MODEL

2020 Explorer LT Hybrid 4WD

EXTERIOR COLOR

Atlas Blue

INTERIOR COLOR

Sandstone leather

ENGINE

3.3-liter hybrid

TRANSMISSION

10-speed modular hybrid

OPTIONS

- Equipment group 310A
 - 20" hand polished aluminum wheels
 - Self-sealing P255/55R20 all-season tires (4x4 only)
 - Active noise cancellation
 - High-series brakes
 - Mini spare tire
 - Twin-panel moonroof
 - Class III trailer tow package
- Note: Contains cargo area management system

AVAILABILITY

Summer 2019

BASE MSRP

\$52,280

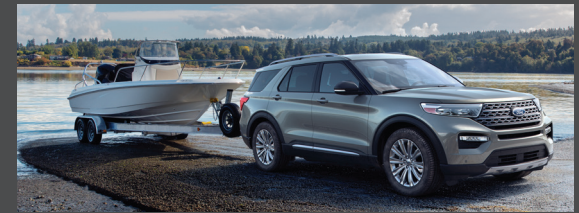
PRICE AS EQUIPPED

\$57,975*

*Includes \$1,095 destination and delivery



- 3.3-liter hybrid engine projected to return an EPA-estimated range of more than 500 miles per tank in rear-wheel-drive models
- Hybrid engine produces a 318 system horsepower and 322 lb.-ft of torque
- Hybrid battery is mounted below the second-row seats rather than stored in the cargo area
- Explorer Hybrid introduces a new 10-speed modular hybrid transmission



- All-new Explorer Hybrid retains classic design cues that have made Explorer the best-selling SUV ever, and adds a more sloping roofline and shorter front overhang
- New Explorer Hybrid features the most comfortable, quietest Explorer cabin ever
- Michelin Selfseal® tires are standard on Hybrid models



- A 14-speaker B&O premium audio system and a wireless phone charging pad are standard on Hybrid models
- Hybrid models feature Active Noise Cancellation to quiet the sound of the gas engine
- An available 12.3-inch all-digital cluster displays important vehicle information and uses 3D animated graphics to display drive mode selections
- A suite of Ford Co-Pilot360™ driver-assist technologies is standard across the Explorer lineup
- Standard FordPass Connect™ gives 4G LTE Wi-Fi access to the entire vehicle



ALL-NEW 2020 EXPLORER HYBRID



VIN 364

MODEL

2020 Explorer LT Hybrid 4WD

EXTERIOR COLOR

Atlas Blue

INTERIOR COLOR

Sandstone leather

ENGINE

3.3-liter hybrid

TRANSMISSION

10-speed modular hybrid

OPTIONS

- Equipment group 310A
 - 20" hand polished aluminum wheels
 - Self-sealing P255/55R20 all-season tires (4x4 only)
 - Active noise cancellation
 - High-series brakes
 - Mini spare tire
 - Twin-panel moonroof
 - Class III trailer tow package
- Note: Contains cargo area management system

AVAILABILITY

Fall 2019

BASE MSRP

\$52,280

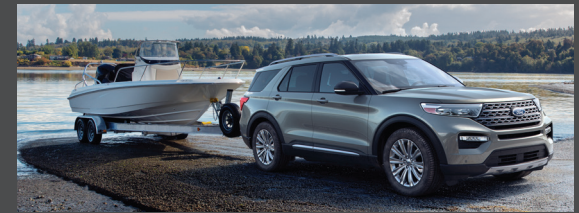
PRICE AS EQUIPPED

\$57,975*

*Includes \$1,095 destination and delivery



- 3.3-liter hybrid engine projected to return an EPA-estimated range of more than 500 miles per tank in rear-wheel-drive models
- Hybrid engine produces a 318 system horsepower and 322 lb.-ft of torque
- Hybrid battery is mounted below the second-row seats rather than stored in the cargo area
- Explorer Hybrid introduces a new 10-speed modular hybrid transmission



- All-new Explorer Hybrid retains classic design cues that have made Explorer the best-selling SUV ever, and adds a more sloping roofline and shorter front overhang
- New Explorer Hybrid features the most comfortable, quietest Explorer cabin ever
- Michelin Selfseal® tires are standard on Hybrid models



- A 14-speaker B&O premium audio system and a wireless phone charging pad are standard on Hybrid models
- Hybrid models feature Active Noise Cancellation to quiet the sound of the gas engine
- An available 12.3-inch all-digital cluster displays important vehicle information and uses 3D animated graphics to display drive mode selections
- A suite of Ford Co-Pilot360™ driver-assist technologies is standard across the Explorer lineup
- Standard FordPass Connect™ gives 4G LTE Wi-Fi access to the entire vehicle



ALL-NEW 2020 EXPLORER HYBRID



VIN 365

MODEL

2020 Explorer LT Hybrid 4WD

EXTERIOR COLOR

Atlas Blue

INTERIOR COLOR

Sandstone leather

ENGINE

3.3-liter hybrid

TRANSMISSION

10-speed modular hybrid

OPTIONS

- Equipment group 310A
 - 20" hand polished aluminum wheels
 - Self-sealing P255/55R20 all-season tires (4x4 only)
 - Active noise cancellation
 - High-series brakes
 - Mini spare tire
 - Twin-panel moonroof
 - Class III trailer tow package
- Note: Contains cargo area management system

AVAILABILITY

Fall 2019

BASE MSRP

\$52,280

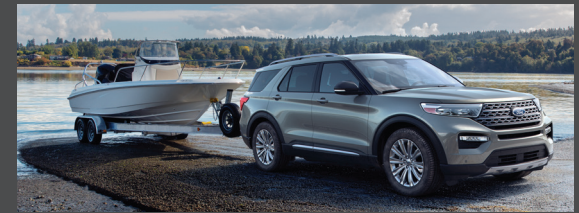
PRICE AS EQUIPPED

\$57,975*

*Includes \$1,095 destination and delivery



- 3.3-liter hybrid engine projected to return an EPA-estimated range of more than 500 miles per tank in rear-wheel-drive models
- Hybrid engine produces a 318 system horsepower and 322 lb.-ft of torque
- Hybrid battery is mounted below the second-row seats rather than stored in the cargo area
- Explorer Hybrid introduces a new 10-speed modular hybrid transmission



- All-new Explorer Hybrid retains classic design cues that have made Explorer the best-selling SUV ever, and adds a more sloping roofline and shorter front overhang
- New Explorer Hybrid features the most comfortable, quietest Explorer cabin ever
- Michelin Selfseal® tires are standard on Hybrid models



- A 14-speaker B&O premium audio system and a wireless phone charging pad are standard on Hybrid models
- Hybrid models feature Active Noise Cancellation to quiet the sound of the gas engine
- An available 12.3-inch all-digital cluster displays important vehicle information and uses 3D animated graphics to display drive mode selections
- A suite of Ford Co-Pilot360™ driver-assist technologies is standard across the Explorer lineup
- Standard FordPass Connect™ gives 4G LTE Wi-Fi access to the entire vehicle



ALL-NEW 2020 EXPLORER HYBRID



VIN 366

MODEL

2020 Explorer LT Hybrid 4WD

EXTERIOR COLOR

Atlas Blue

INTERIOR COLOR

Sandstone leather

ENGINE

3.3-liter hybrid

TRANSMISSION

10-speed modular hybrid

OPTIONS

- Equipment group 310A
 - 20" hand polished aluminum wheels
 - Self-sealing P255/55R20 all-season tires (4x4 only)
 - Active noise cancellation
 - High-series brakes
 - Mini spare tire
 - Twin-panel moonroof
 - Class III trailer tow package
- Note: Contains cargo area management system

AVAILABILITY

Fall 2019

BASE MSRP

\$52,280

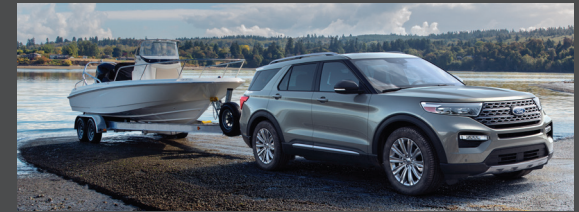
PRICE AS EQUIPPED

\$57,975*

*Includes \$1,095 destination and delivery



- 3.3-liter hybrid engine projected to return an EPA-estimated range of more than 500 miles per tank in rear-wheel-drive models
- Hybrid engine produces a 318 system horsepower and 322 lb.-ft of torque
- Hybrid battery is mounted below the second-row seats rather than stored in the cargo area
- Explorer Hybrid introduces a new 10-speed modular hybrid transmission



- All-new Explorer Hybrid retains classic design cues that have made Explorer the best-selling SUV ever, and adds a more sloping roofline and shorter front overhang
- New Explorer Hybrid features the most comfortable, quietest Explorer cabin ever
- Michelin Selfseal® tires are standard on Hybrid models



- A 14-speaker B&O premium audio system and a wireless phone charging pad are standard on Hybrid models
- Hybrid models feature Active Noise Cancellation to quiet the sound of the gas engine
- An available 12.3-inch all-digital cluster displays important vehicle information and uses 3D animated graphics to display drive mode selections
- A suite of Ford Co-Pilot360™ driver-assist technologies is standard across the Explorer lineup
- Standard FordPass Connect™ gives 4G LTE Wi-Fi access to the entire vehicle



ALL-NEW 2020 EXPLORER HYBRID



VIN 346

MODEL

2020 Explorer LT Hybrid 4WD

EXTERIOR COLOR

Atlas Blue

INTERIOR COLOR

Ebony leather

ENGINE

3.3-liter hybrid

TRANSMISSION

10-speed modular hybrid

OPTIONS

- Equipment group 310A
 - 20" hand polished aluminum wheels
 - Self-sealing P255/55R20 all-season tires (4x4 only)
 - Active noise cancellation
 - High-series brakes
 - Mini spare tire
- Twin-panel moonroof

AVAILABILITY

Fall 2019

BASE MSRP

\$54,475

PRICE AS EQUIPPED

\$57,265*

*Includes \$1,095 destination and delivery



- 3.3-liter hybrid engine projected to return an EPA-estimated range of more than 500 miles per tank in rear-wheel-drive models
- Hybrid engine produces a 318 system horsepower and 322 lb.-ft of torque
- Hybrid battery is mounted below the second-row seats rather than stored in the cargo area
- Explorer Hybrid introduces a new 10-speed modular hybrid transmission



- All-new Explorer Hybrid retains classic design cues that have made Explorer the best-selling SUV ever, and adds a more sloping roofline and shorter front overhang
- New Explorer Hybrid features the most comfortable, quietest Explorer cabin ever
- Michelin Selfseal® tires are standard on Hybrid models



- A 14-speaker B&O premium audio system and a wireless phone charging pad are standard on Hybrid models
- Hybrid models feature Active Noise Cancellation to quiet the sound of the gas engine
- An available 12.3-inch all-digital cluster displays important vehicle information and uses 3D animated graphics to display drive mode selections
- A suite of Ford Co-Pilot360™ driver-assist technologies is standard across the Explorer lineup
- Standard FordPass Connect™ gives 4G LTE Wi-Fi access to the entire vehicle



ALL-NEW 2020 EXPLORER HYBRID



VIN 347

MODEL

2020 Explorer LT Hybrid 4WD

EXTERIOR COLOR

Atlas Blue

INTERIOR COLOR

Ebony leather

ENGINE

3.3-liter hybrid

TRANSMISSION

10-speed modular hybrid

OPTIONS

- Equipment group 310A
 - 20" hand polished aluminum wheels
 - Self-sealing P255/55R20 all-season tires (4x4 only)
 - Active noise cancellation
 - High-series brakes
 - Mini spare tire
- Twin-panel moonroof

AVAILABILITY

Fall 2019

BASE MSRP

\$52,280

PRICE AS EQUIPPED

\$57,265*

*Includes \$1,095 destination and delivery



- 3.3-liter hybrid engine projected to return an EPA-estimated range of more than 500 miles per tank in rear-wheel-drive models
- Hybrid engine produces a 318 system horsepower and 322 lb.-ft of torque
- Hybrid battery is mounted below the second-row seats rather than stored in the cargo area
- Explorer Hybrid introduces a new 10-speed modular hybrid transmission



- All-new Explorer Hybrid retains classic design cues that have made Explorer the best-selling SUV ever, and adds a more sloping roofline and shorter front overhang
- New Explorer Hybrid features the most comfortable, quietest Explorer cabin ever
- Michelin Selfseal® tires are standard on Hybrid models



- A 14-speaker B&O premium audio system and a wireless phone charging pad are standard on Hybrid models
- Hybrid models feature Active Noise Cancellation to quiet the sound of the gas engine
- An available 12.3-inch all-digital cluster displays important vehicle information and uses 3D animated graphics to display drive mode selections
- A suite of Ford Co-Pilot360™ driver-assist technologies is standard across the Explorer lineup
- Standard FordPass Connect™ gives 4G LTE Wi-Fi access to the entire vehicle



ALL-NEW 2020 EXPLORER HYBRID



VIN 348

MODEL

2020 Explorer LT Hybrid 4WD

EXTERIOR COLOR

Atlas Blue

INTERIOR COLOR

Ebony leather

ENGINE

3.3-liter hybrid

TRANSMISSION

10-speed modular hybrid

OPTIONS

- Equipment group 310A
 - 20" hand polished aluminum wheels
 - Self-sealing P255/55R20 all-season tires (4x4 only)
 - Active noise cancellation
 - High-series brakes
 - Mini spare tire
- Twin-panel moonroof

AVAILABILITY

Fall 2019

BASE MSRP

\$52,280

PRICE AS EQUIPPED

\$57,265*

*Includes \$1,095 destination and delivery



- 3.3-liter hybrid engine projected to return an EPA-estimated range of more than 500 miles per tank in rear-wheel-drive models
- Hybrid engine produces a 318 system horsepower and 322 lb.-ft of torque
- Hybrid battery is mounted below the second-row seats rather than stored in the cargo area
- Explorer Hybrid introduces a new 10-speed modular hybrid transmission



- All-new Explorer Hybrid retains classic design cues that have made Explorer the best-selling SUV ever, and adds a more sloping roofline and shorter front overhang
- New Explorer Hybrid features the most comfortable, quietest Explorer cabin ever
- Michelin Selfseal® tires are standard on Hybrid models



- A 14-speaker B&O premium audio system and a wireless phone charging pad are standard on Hybrid models
- Hybrid models feature Active Noise Cancellation to quiet the sound of the gas engine
- An available 12.3-inch all-digital cluster displays important vehicle information and uses 3D animated graphics to display drive mode selections
- A suite of Ford Co-Pilot360™ driver-assist technologies is standard across the Explorer lineup
- Standard FordPass Connect™ gives 4G LTE Wi-Fi access to the entire vehicle



ALL-NEW 2020 EXPLORER HYBRID



VIN 349

MODEL

2020 Explorer LT Hybrid RWD

EXTERIOR COLOR

Atlas Blue

INTERIOR COLOR

Ebony leather

ENGINE

3.3-liter hybrid

TRANSMISSION

10-speed modular hybrid

OPTIONS

- Equipment group 310A
 - 20" hand polished aluminum wheels
 - Self-sealing P255/55R20 all-season tires (4x4 only)
 - Active noise cancellation
 - High-series brakes
 - Mini spare tire
- Twin-panel moonroof

AVAILABILITY

Fall 2019

BASE MSRP

\$52,280

PRICE AS EQUIPPED

\$57,265*

*Includes \$1,095 destination and delivery



- 3.3-liter hybrid engine projected to return an EPA-estimated range of more than 500 miles per tank in rear-wheel-drive models
- Hybrid engine produces a 318 system horsepower and 322 lb.-ft of torque
- Hybrid battery is mounted below the second-row seats rather than stored in the cargo area
- Explorer Hybrid introduces a new 10-speed modular hybrid transmission



- All-new Explorer Hybrid retains classic design cues that have made Explorer the best-selling SUV ever, and adds a more sloping roofline and shorter front overhang
- New Explorer Hybrid features the most comfortable, quietest Explorer cabin ever
- Michelin Selfseal® tires are standard on Hybrid models



- A 14-speaker B&O premium audio system and a wireless phone charging pad are standard on Hybrid models
- Hybrid models feature Active Noise Cancellation to quiet the sound of the gas engine
- An available 12.3-inch all-digital cluster displays important vehicle information and uses 3D animated graphics to display drive mode selections
- A suite of Ford Co-Pilot360™ driver-assist technologies is standard across the Explorer lineup
- Standard FordPass Connect™ gives 4G LTE Wi-Fi access to the entire vehicle



ALL-NEW 2020 EXPLORER HYBRID



VIN 350

MODEL

2020 Explorer LT Hybrid 4WD

EXTERIOR COLOR

Atlas Blue

INTERIOR COLOR

Ebony leather

ENGINE

3.3-liter hybrid

TRANSMISSION

10-speed modular hybrid

OPTIONS

- Equipment group 310A
 - 20" hand polished aluminum wheels
 - Self-sealing P255/55R20 all-season tires (4x4 only)
 - Active noise cancellation
 - High-series brakes
 - Mini spare tire
- Twin-panel moonroof

AVAILABILITY

Fall 2019

BASE MSRP

\$52,280

PRICE AS EQUIPPED

\$57,265*

*Includes \$1,095 destination and delivery



- 3.3-liter hybrid engine projected to return an EPA-estimated range of more than 500 miles per tank in rear-wheel-drive models
- Hybrid engine produces a 318 system horsepower and 322 lb.-ft of torque
- Hybrid battery is mounted below the second-row seats rather than stored in the cargo area
- Explorer Hybrid introduces a new 10-speed modular hybrid transmission



- All-new Explorer Hybrid retains classic design cues that have made Explorer the best-selling SUV ever, and adds a more sloping roofline and shorter front overhang
- New Explorer Hybrid features the most comfortable, quietest Explorer cabin ever
- Michelin Selfseal® tires are standard on Hybrid models



- A 14-speaker B&O premium audio system and a wireless phone charging pad are standard on Hybrid models
- Hybrid models feature Active Noise Cancellation to quiet the sound of the gas engine
- An available 12.3-inch all-digital cluster displays important vehicle information and uses 3D animated graphics to display drive mode selections
- A suite of Ford Co-Pilot360™ driver-assist technologies is standard across the Explorer lineup
- Standard FordPass Connect™ gives 4G LTE Wi-Fi access to the entire vehicle



ALL-NEW 2020 EXPLORER HYBRID



VIN 351

MODEL

2020 Explorer LT Hybrid 4WD

EXTERIOR COLOR

Silver Spruce

INTERIOR COLOR

Ebony leather

ENGINE

3.3-liter hybrid

TRANSMISSION

10-speed modular hybrid

OPTIONS

- Equipment group 310A
 - 20" hand polished aluminum wheels
 - Self-sealing P255/55R20 all-season tires (4x4 only)
 - Active noise cancellation
 - High-series brakes
 - Mini spare tire
- Twin-panel moonroof

AVAILABILITY

Fall 2019

BASE MSRP

\$52,280

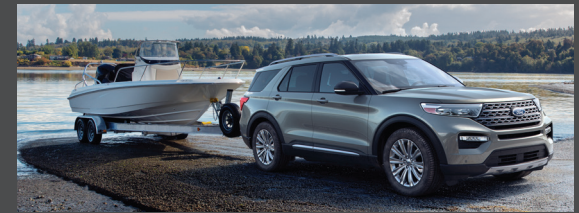
PRICE AS EQUIPPED

\$57,265*

*Includes \$1,095 destination and delivery



- 3.3-liter hybrid engine projected to return an EPA-estimated range of more than 500 miles per tank in rear-wheel-drive models
- Hybrid engine produces a 318 system horsepower and 322 lb.-ft of torque
- Hybrid battery is mounted below the second-row seats rather than stored in the cargo area
- Explorer Hybrid introduces a new 10-speed modular hybrid transmission



- All-new Explorer Hybrid retains classic design cues that have made Explorer the best-selling SUV ever, and adds a more sloping roofline and shorter front overhang
- New Explorer Hybrid features the most comfortable, quietest Explorer cabin ever
- Michelin Selfseal® tires are standard on Hybrid models



- A 14-speaker B&O premium audio system and a wireless phone charging pad are standard on Hybrid models
- Hybrid models feature Active Noise Cancellation to quiet the sound of the gas engine
- An available 12.3-inch all-digital cluster displays important vehicle information and uses 3D animated graphics to display drive mode selections
- A suite of Ford Co-Pilot360™ driver-assist technologies is standard across the Explorer lineup
- Standard FordPass Connect™ gives 4G LTE Wi-Fi access to the entire vehicle



ALL-NEW 2020 EXPLORER HYBRID



VIN 352

MODEL

2020 Explorer LT Hybrid 4WD

EXTERIOR COLOR

Silver Spruce

INTERIOR COLOR

Ebony leather

ENGINE

3.3-liter hybrid

TRANSMISSION

10-speed modular hybrid

OPTIONS

- Equipment group 310A
 - 20" hand polished aluminum wheels
 - Self-sealing P255/55R20 all-season tires (4x4 only)
 - Active noise cancellation
 - High-series brakes
 - Mini spare tire
- Twin-panel moonroof

AVAILABILITY

Fall 2019

BASE MSRP

\$52,280

PRICE AS EQUIPPED

\$57,265*

*Includes \$1,095 destination and delivery



- 3.3-liter hybrid engine projected to return an EPA-estimated range of more than 500 miles per tank in rear-wheel-drive models
- Hybrid engine produces a 318 system horsepower and 322 lb.-ft of torque
- Hybrid battery is mounted below the second-row seats rather than stored in the cargo area
- Explorer Hybrid introduces a new 10-speed modular hybrid transmission



- All-new Explorer Hybrid retains classic design cues that have made Explorer the best-selling SUV ever, and adds a more sloping roofline and shorter front overhang
- New Explorer Hybrid features the most comfortable, quietest Explorer cabin ever
- Michelin Selfseal® tires are standard on Hybrid models



- A 14-speaker B&O premium audio system and a wireless phone charging pad are standard on Hybrid models
- Hybrid models feature Active Noise Cancellation to quiet the sound of the gas engine
- An available 12.3-inch all-digital cluster displays important vehicle information and uses 3D animated graphics to display drive mode selections
- A suite of Ford Co-Pilot360™ driver-assist technologies is standard across the Explorer lineup
- Standard FordPass Connect™ gives 4G LTE Wi-Fi access to the entire vehicle



ALL-NEW 2020 EXPLORER HYBRID



VIN 353

MODEL

2020 Explorer LT Hybrid 4WD

EXTERIOR COLOR

Silver Spruce

INTERIOR COLOR

Ebony leather

ENGINE

3.3-liter hybrid

TRANSMISSION

10-speed modular hybrid

OPTIONS

- Equipment group 310A
 - 20" hand polished aluminum wheels
 - Self-sealing P255/55R20 all-season tires (4x4 only)
 - Active noise cancellation
 - High-series brakes
 - Mini spare tire
- Twin-panel moonroof

AVAILABILITY

Fall 2019

BASE MSRP

\$52,280

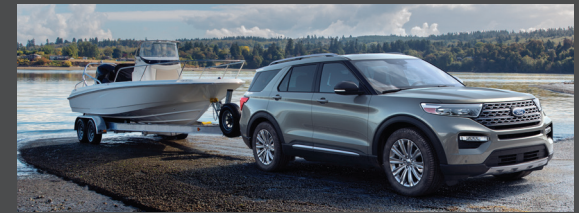
PRICE AS EQUIPPED

\$57,265*

*Includes \$1,095 destination and delivery



- 3.3-liter hybrid engine projected to return an EPA-estimated range of more than 500 miles per tank in rear-wheel-drive models
- Hybrid engine produces a 318 system horsepower and 322 lb.-ft of torque
- Hybrid battery is mounted below the second-row seats rather than stored in the cargo area
- Explorer Hybrid introduces a new 10-speed modular hybrid transmission



- All-new Explorer Hybrid retains classic design cues that have made Explorer the best-selling SUV ever, and adds a more sloping roofline and shorter front overhang
- New Explorer Hybrid features the most comfortable, quietest Explorer cabin ever
- Michelin Selfseal® tires are standard on Hybrid models



- A 14-speaker B&O premium audio system and a wireless phone charging pad are standard on Hybrid models
- Hybrid models feature Active Noise Cancellation to quiet the sound of the gas engine
- An available 12.3-inch all-digital cluster displays important vehicle information and uses 3D animated graphics to display drive mode selections
- A suite of Ford Co-Pilot360™ driver-assist technologies is standard across the Explorer lineup
- Standard FordPass Connect™ gives 4G LTE Wi-Fi access to the entire vehicle



ALL-NEW 2020 EXPLORER HYBRID



VIN 354

MODEL

2020 Explorer LT Hybrid 4WD

EXTERIOR COLOR

Silver Spruce

INTERIOR COLOR

Ebony leather

ENGINE

3.3-liter hybrid

TRANSMISSION

10-speed modular hybrid

OPTIONS

- Equipment group 310A
 - 20" hand polished aluminum wheels
 - Self-sealing P255/55R20 all-season tires (4x4 only)
 - Active noise cancellation
 - High-series brakes
 - Mini spare tire
- Twin-panel moonroof

AVAILABILITY

Fall 2019

BASE MSRP

\$52,280

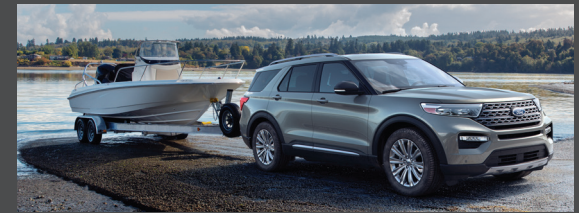
PRICE AS EQUIPPED

\$57,265*

*Includes \$1,095 destination and delivery



- 3.3-liter hybrid engine projected to return an EPA-estimated range of more than 500 miles per tank in rear-wheel-drive models
- Hybrid engine produces a 318 system horsepower and 322 lb.-ft of torque
- Hybrid battery is mounted below the second-row seats rather than stored in the cargo area
- Explorer Hybrid introduces a new 10-speed modular hybrid transmission



- All-new Explorer Hybrid retains classic design cues that have made Explorer the best-selling SUV ever, and adds a more sloping roofline and shorter front overhang
- New Explorer Hybrid features the most comfortable, quietest Explorer cabin ever
- Michelin Selfseal® tires are standard on Hybrid models



- A 14-speaker B&O premium audio system and a wireless phone charging pad are standard on Hybrid models
- Hybrid models feature Active Noise Cancellation to quiet the sound of the gas engine
- An available 12.3-inch all-digital cluster displays important vehicle information and uses 3D animated graphics to display drive mode selections
- A suite of Ford Co-Pilot360™ driver-assist technologies is standard across the Explorer lineup
- Standard FordPass Connect™ gives 4G LTE Wi-Fi access to the entire vehicle



ALL-NEW 2020 EXPLORER HYBRID



VIN 355

MODEL

2020 Explorer LT Hybrid 4WD

EXTERIOR COLOR

Silver Spruce

INTERIOR COLOR

Ebony leather

ENGINE

3.3-liter hybrid

TRANSMISSION

10-speed modular hybrid

OPTIONS

- Equipment group 310A
 - 20" hand polished aluminum wheels
 - Self-sealing P255/55R20 all-season tires (4x4 only)
 - Active noise cancellation
 - High-series brakes
 - Mini spare tire
- Twin-panel moonroof

AVAILABILITY

Fall 2019

BASE MSRP

\$52,280

PRICE AS EQUIPPED

\$55,665*

*Includes \$1,095 destination and delivery



- 3.3-liter hybrid engine projected to return an EPA-estimated range of more than 500 miles per tank in rear-wheel-drive models
- Hybrid engine produces a 318 system horsepower and 322 lb.-ft of torque
- Hybrid battery is mounted below the second-row seats rather than stored in the cargo area
- Explorer Hybrid introduces a new 10-speed modular hybrid transmission



- All-new Explorer Hybrid retains classic design cues that have made Explorer the best-selling SUV ever, and adds a more sloping roofline and shorter front overhang
- New Explorer Hybrid features the most comfortable, quietest Explorer cabin ever
- Michelin Selfseal® tires are standard on Hybrid models



- A 14-speaker B&O premium audio system and a wireless phone charging pad are standard on Hybrid models
- Hybrid models feature Active Noise Cancellation to quiet the sound of the gas engine
- An available 12.3-inch all-digital cluster displays important vehicle information and uses 3D animated graphics to display drive mode selections
- A suite of Ford Co-Pilot360™ driver-assist technologies is standard across the Explorer lineup
- Standard FordPass Connect™ gives 4G LTE Wi-Fi access to the entire vehicle



ALL-NEW 2020 EXPLORER



VIN 343

MODEL

2020 Explorer Limited RWD

EXTERIOR COLOR

Star White Metallic Tri-Coat

INTERIOR COLOR

Ebony leather

ENGINE

2.3-liter I-4 EcoBoost

TRANSMISSION

10-speed automatic

OPTIONS

- Equipment group 300A
- Star White Metallic Tri-Coat
- Twin-panel moonroof
- Class III trailer tow package

Note: Contains cargo area management system

- 20" hand polished aluminum wheels

AVAILABILITY

Summer 2019

BASE MSRP

\$48,130

PRICE AS EQUIPPED

\$52,820*

*Includes \$1,095 destination and delivery



HIGHLIGHTS



- 3.0-liter EcoBoost® engine produces 365 horsepower and 380 lb.-ft. of torque
- Rear-wheel-drive architecture enables improved towing capability, up to 5,600 pounds when properly equipped
- Selectable drive mode system features seven settings for normal, sport, trail, slippery, tow/haul, eco and deep snow/sand conditions



- All-new Explorer retains classic design cues that have made it the best-selling SUV ever
- 2020 Ford Explorer features the model's most comfortable, quietest cabin ever
- Explorer Platinum includes a standard twin-panel moonroof
- Explorer offers seven wheel designs, including 21-inch premium aluminum wheels available on Platinum models
- Michelin Selfseal® tires are standard on Platinum models



- A 14-speaker B&O premium audio system and a wireless phone charging pad are standard on Platinum models
- An available 12.3-inch all-digital cluster displays important vehicle information and uses 3D animated graphics to change display to show drive mode selections
- A suite of Ford Co-Pilot360™ driver-assist technologies is standard across the Explorer lineup
- Standard FordPass Connect™ gives 4G LTE Wi-Fi access to the entire vehicle

ALL-NEW 2020 EXPLORER



VIN 343

MODEL

2020 Explorer Limited RWD

EXTERIOR COLOR

Star White Metallic Tri-Coat

INTERIOR COLOR

Ebony leather

ENGINE

2.3-liter I-4 EcoBoost

TRANSMISSION

10-speed automatic

OPTIONS

- Equipment group 300A
- Star White Metallic Tri-Coat
- Twin-panel moonroof
- Class III trailer tow package

Note: Contains cargo area management system

- 20" hand polished aluminum wheels

AVAILABILITY

Summer 2019

BASE MSRP

\$48,130

PRICE AS EQUIPPED

\$52,820*

*Includes \$1,095 destination and delivery

HIGHLIGHTS



- 3.0-liter EcoBoost® engine produces 365 horsepower and 380 lb.-ft. of torque
- Rear-wheel-drive architecture enables improved towing capability, up to 5,600 pounds when properly equipped
- Selectable drive mode system features seven settings for normal, sport, trail, slippery, tow/haul, eco and deep snow/sand conditions



- All-new Explorer retains classic design cues that have made it the best-selling SUV ever
- 2020 Ford Explorer features the model's most comfortable, quietest cabin ever
- Explorer Platinum includes a standard twin-panel moonroof
- Explorer offers seven wheel designs, including 21-inch premium aluminum wheels available on Platinum models
- Michelin Selfseal® tires are standard on Platinum models



- A 14-speaker B&O premium audio system and a wireless phone charging pad are standard on Platinum models
- An available 12.3-inch all-digital cluster displays important vehicle information and uses 3D animated graphics to change display to show drive mode selections
- A suite of Ford Co-Pilot360™ driver-assist technologies is standard across the Explorer lineup
- Standard FordPass Connect™ gives 4G LTE Wi-Fi access to the entire vehicle



ALL-NEW 2020 EXPLORER



VIN 343

MODEL

2020 Explorer Limited RWD

EXTERIOR COLOR

Star White Metallic Tri-Coat

INTERIOR COLOR

Ebony leather

ENGINE

2.3-liter I-4 EcoBoost

TRANSMISSION

10-speed automatic

OPTIONS

- Equipment group 300A
- Star White Metallic Tri-Coat
- Twin-panel moonroof
- Class III trailer tow package

Note: Contains cargo area management system

- 20" hand polished aluminum wheels

AVAILABILITY

Summer 2019

BASE MSRP

\$48,130

PRICE AS EQUIPPED

\$52,820*

*Includes \$1,095 destination and delivery



HIGHLIGHTS



- 3.0-liter EcoBoost® engine produces 365 horsepower and 380 lb.-ft. of torque
- Rear-wheel-drive architecture enables improved towing capability, up to 5,600 pounds when properly equipped
- Selectable drive mode system features seven settings for normal, sport, trail, slippery, tow/haul, eco and deep snow/sand conditions



- All-new Explorer retains classic design cues that have made it the best-selling SUV ever
- 2020 Ford Explorer features the model's most comfortable, quietest cabin ever
- Explorer Platinum includes a standard twin-panel moonroof
- Explorer offers seven wheel designs, including 21-inch premium aluminum wheels available on Platinum models
- Michelin Selfseal® tires are standard on Platinum models



- A 14-speaker B&O premium audio system and a wireless phone charging pad are standard on Platinum models
- An available 12.3-inch all-digital cluster displays important vehicle information and uses 3D animated graphics to change display to show drive mode selections
- A suite of Ford Co-Pilot360™ driver-assist technologies is standard across the Explorer lineup
- Standard FordPass Connect™ gives 4G LTE Wi-Fi access to the entire vehicle

ALL-NEW 2020 EXPLORER



VIN 343

MODEL

2020 Explorer Limited RWD

EXTERIOR COLOR

Star White Metallic Tri-Coat

INTERIOR COLOR

Ebony leather

ENGINE

2.3-liter I-4 EcoBoost

TRANSMISSION

10-speed automatic

OPTIONS

- Equipment group 300A
- Star White Metallic Tri-Coat
- Twin-panel moonroof
- Class III trailer tow package

Note: Contains cargo area management system

- 20" hand polished aluminum wheels

AVAILABILITY

Summer 2019

BASE MSRP

\$48,130

PRICE AS EQUIPPED

\$52,820*

*Includes \$1,095 destination and delivery



HIGHLIGHTS



- 3.0-liter EcoBoost® engine produces 365 horsepower and 380 lb.-ft. of torque
- Rear-wheel-drive architecture enables improved towing capability, up to 5,600 pounds when properly equipped
- Selectable drive mode system features seven settings for normal, sport, trail, slippery, tow/haul, eco and deep snow/sand conditions



- All-new Explorer retains classic design cues that have made it the best-selling SUV ever
- 2020 Ford Explorer features the model's most comfortable, quietest cabin ever
- Explorer Platinum includes a standard twin-panel moonroof
- Explorer offers seven wheel designs, including 21-inch premium aluminum wheels available on Platinum models
- Michelin Selfseal® tires are standard on Platinum models



- A 14-speaker B&O premium audio system and a wireless phone charging pad are standard on Platinum models
- An available 12.3-inch all-digital cluster displays important vehicle information and uses 3D animated graphics to change display to show drive mode selections
- A suite of Ford Co-Pilot360™ driver-assist technologies is standard across the Explorer lineup
- Standard FordPass Connect™ gives 4G LTE Wi-Fi access to the entire vehicle

ALL-NEW 2020 EXPLORER



VIN 343

MODEL

2020 Explorer Limited RWD

EXTERIOR COLOR

Star White Metallic Tri-Coat

INTERIOR COLOR

Ebony leather

ENGINE

2.3-liter I-4 EcoBoost

TRANSMISSION

10-speed automatic

OPTIONS

- Equipment group 300A
- Star White Metallic Tri-Coat
- Twin-panel moonroof
- Class III trailer tow package

Note: Contains cargo area management system

- 20" hand polished aluminum wheels

AVAILABILITY

Summer 2019

BASE MSRP

\$48,130

PRICE AS EQUIPPED

\$52,820*

*Includes \$1,095 destination and delivery

HIGHLIGHTS



- 3.0-liter EcoBoost® engine produces 365 horsepower and 380 lb.-ft. of torque
- Rear-wheel-drive architecture enables improved towing capability, up to 5,600 pounds when properly equipped
- Selectable drive mode system features seven settings for normal, sport, trail, slippery, tow/haul, eco and deep snow/sand conditions



- All-new Explorer retains classic design cues that have made it the best-selling SUV ever
- 2020 Ford Explorer features the model's most comfortable, quietest cabin ever
- Explorer Platinum includes a standard twin-panel moonroof
- Explorer offers seven wheel designs, including 21-inch premium aluminum wheels available on Platinum models
- Michelin Selfseal® tires are standard on Platinum models



- A 14-speaker B&O premium audio system and a wireless phone charging pad are standard on Platinum models
- An available 12.3-inch all-digital cluster displays important vehicle information and uses 3D animated graphics to change display to show drive mode selections
- A suite of Ford Co-Pilot360™ driver-assist technologies is standard across the Explorer lineup
- Standard FordPass Connect™ gives 4G LTE Wi-Fi access to the entire vehicle



NEW 2020 EXPLORER



VIN 383

MODEL

2020 Explorer Platinum 4WD

EXTERIOR COLOR

Iconic Silver

INTERIOR COLOR

Ebony leather

ENGINE

3.0-liter EcoBoost V6

TRANSMISSION

10-speed automatic

OPTIONS

- Equipment group 600A
- 21" premium aluminum wheels
- Premium technology package
 - Multicontour seats with Active Motion®
 - 10.1-inch LCD capacitive portrait touch screen with swipe and pinch-to-zoom capability
 - 980-watt, 14-speaker B&O sound system

AVAILABILITY

Summer 2019

BASE MSRP

\$58,250

PRICE AS EQUIPPED

\$60,935*

**Includes \$1,095 destination and delivery*

HIGHLIGHTS



- 3.0-liter EcoBoost® engine produces 365 horsepower and 380 lb.-ft. of torque
- Rear-wheel-drive architecture enables improved towing capability, up to 5,600 pounds when properly equipped
- Selectable drive mode system includes seven modes with Normal, Sport, Trail, Slippery, Tow/Haul, Eco, and Deep Snow/Sand conditions



- All-new Explorer retains classic design cues, that have made Explorer the best-selling SUV ever
- New Explorer features the most comfortable, quietest Explorer cabin ever
- Explorer Platinum includes a standard twin-panel moonroof
- Explorer offers seven wheel designs, including 21-inch premium aluminum wheels available on Platinum models
- Michelin Selfseal® tires are standard on Platinum models



- A 14-speaker B&O premium audio system and a wireless phone charging pad are standard on Platinum models
- An available 12.3-inch all-digital cluster displays important vehicle information and uses 3D animated graphics to display drive mode selections
- A suite of Ford Co-Pilot360™ driver-assist technologies is standard across the Explorer lineup
- Standard FordPass Connect™ gives 4G LTE Wi-Fi access to the entire vehicle



NEW 2020 EXPLORER



VIN 384

MODEL

2020 Explorer Platinum 4WD

EXTERIOR COLOR

Iconic Silver

INTERIOR COLOR

Ebony leather

ENGINE

3.0-liter EcoBoost V6

TRANSMISSION

10-speed automatic

OPTIONS

- Equipment group 600A
- 21" premium aluminum wheels
- Premium technology package
 - Multicontour seats with Active Motion®
 - 10.1-inch LCD capacitive portrait touch screen with swipe and pinch-to-zoom capability
 - 980-watt, 14-speaker B&O sound system

AVAILABILITY

Summer 2019

BASE MSRP

\$58,250

PRICE AS EQUIPPED

\$60,935*

**Includes \$1,095 destination and delivery*



- 3.0-liter EcoBoost® engine produces 365 horsepower and 380 lb.-ft. of torque
- Rear-wheel-drive architecture enables improved towing capability, up to 5,600 pounds when properly equipped
- Selectable drive mode system includes seven modes with Normal, Sport, Trail, Slippery, Tow/Haul, Eco, and Deep Snow/Sand conditions



- All-new Explorer retains classic design cues, that have made Explorer the best-selling SUV ever
- New Explorer features the most comfortable, quietest Explorer cabin ever
- Explorer Platinum includes a standard twin-panel moonroof
- Explorer offers seven wheel designs, including 21-inch premium aluminum wheels available on Platinum models
- Michelin Selfseal® tires are standard on Platinum models



- A 14-speaker B&O premium audio system and a wireless phone charging pad are standard on Platinum models
- An available 12.3-inch all-digital cluster displays important vehicle information and uses 3D animated graphics to display drive mode selections
- A suite of Ford Co-Pilot360™ driver-assist technologies is standard across the Explorer lineup
- Standard FordPass Connect™ gives 4G LTE Wi-Fi access to the entire vehicle



NEW 2020 EXPLORER



VIN 385

MODEL

2020 Explorer Platinum 4WD

EXTERIOR COLOR

Iconic Silver

INTERIOR COLOR

Ebony leather

ENGINE

3.0-liter EcoBoost V6

TRANSMISSION

10-speed automatic

OPTIONS

- Equipment group 600A
- 21" premium aluminum wheels
- Premium technology package
 - Multicontour seats with Active Motion®
 - 10.1-inch LCD capacitive portrait touch screen with swipe and pinch-to-zoom capability
 - 980-watt, 14-speaker B&O sound system

AVAILABILITY

Summer 2019

BASE MSRP

\$58,250

PRICE AS EQUIPPED

\$60,935*

**Includes \$1,095 destination and delivery*



- 3.0-liter EcoBoost® engine produces 365 horsepower and 380 lb.-ft. of torque
- Rear-wheel-drive architecture enables improved towing capability, up to 5,600 pounds when properly equipped
- Selectable drive mode system includes seven modes with Normal, Sport, Trail, Slippery, Tow/Haul, Eco, and Deep Snow/Sand conditions



- All-new Explorer retains classic design cues, that have made Explorer the best-selling SUV ever
- New Explorer features the most comfortable, quietest Explorer cabin ever
- Explorer Platinum includes a standard twin-panel moonroof
- Explorer offers seven wheel designs, including 21-inch premium aluminum wheels available on Platinum models
- Michelin Selfseal® tires are standard on Platinum models



- A 14-speaker B&O premium audio system and a wireless phone charging pad are standard on Platinum models
- An available 12.3-inch all-digital cluster displays important vehicle information and uses 3D animated graphics to display drive mode selections
- A suite of Ford Co-Pilot360™ driver-assist technologies is standard across the Explorer lineup
- Standard FordPass Connect™ gives 4G LTE Wi-Fi access to the entire vehicle



NEW 2020 EXPLORER



VIN 386

MODEL

2020 Explorer Platinum 4WD

EXTERIOR COLOR

Iconic Silver

INTERIOR COLOR

Ebony leather

ENGINE

3.0-liter EcoBoost V6

TRANSMISSION

10-speed automatic

OPTIONS

- Equipment group 600A
- 21" premium aluminum wheels
- Premium technology package
 - Multicontour seats with Active Motion®
 - 10.1-inch LCD capacitive portrait touch screen with swipe and pinch-to-zoom capability
 - 980-watt, 14-speaker B&O sound system

AVAILABILITY

Summer 2019

BASE MSRP

\$58,250

PRICE AS EQUIPPED

\$60,935*

**Includes \$1,095 destination and delivery*

HIGHLIGHTS



- 3.0-liter EcoBoost® engine produces 365 horsepower and 380 lb.-ft. of torque
- Rear-wheel-drive architecture enables improved towing capability, up to 5,600 pounds when properly equipped
- Selectable drive mode system includes seven modes with Normal, Sport, Trail, Slippery, Tow/Haul, Eco, and Deep Snow/Sand conditions



- All-new Explorer retains classic design cues, that have made Explorer the best-selling SUV ever
- New Explorer features the most comfortable, quietest Explorer cabin ever
- Explorer Platinum includes a standard twin-panel moonroof
- Explorer offers seven wheel designs, including 21-inch premium aluminum wheels available on Platinum models
- Michelin Selfseal® tires are standard on Platinum models



- A 14-speaker B&O premium audio system and a wireless phone charging pad are standard on Platinum models
- An available 12.3-inch all-digital cluster displays important vehicle information and uses 3D animated graphics to display drive mode selections
- A suite of Ford Co-Pilot360™ driver-assist technologies is standard across the Explorer lineup
- Standard FordPass Connect™ gives 4G LTE Wi-Fi access to the entire vehicle



NEW 2020 EXPLORER



VIN 387

MODEL

2020 Explorer Platinum 4WD

EXTERIOR COLOR

Iconic Silver

INTERIOR COLOR

Ebony leather

ENGINE

3.0-liter EcoBoost V6

TRANSMISSION

10-speed automatic

OPTIONS

- Equipment group 600A
- 21" premium aluminum wheels
- Premium technology package
 - Multicontour seats with Active Motion®
 - 10.1-inch LCD capacitive portrait touch screen with swipe and pinch-to-zoom capability
 - 980-watt, 14-speaker B&O sound system

AVAILABILITY

Summer 2019

BASE MSRP

\$58,250

PRICE AS EQUIPPED

\$60,935*

**Includes \$1,095 destination and delivery*



- 3.0-liter EcoBoost® engine produces 365 horsepower and 380 lb.-ft. of torque
- Rear-wheel-drive architecture enables improved towing capability, up to 5,600 pounds when properly equipped
- Selectable drive mode system includes seven modes with Normal, Sport, Trail, Slippery, Tow/Haul, Eco, and Deep Snow/Sand conditions



- All-new Explorer retains classic design cues, that have made Explorer the best-selling SUV ever
- New Explorer features the most comfortable, quietest Explorer cabin ever
- Explorer Platinum includes a standard twin-panel moonroof
- Explorer offers seven wheel designs, including 21-inch premium aluminum wheels available on Platinum models
- Michelin Selfseal® tires are standard on Platinum models



- A 14-speaker B&O premium audio system and a wireless phone charging pad are standard on Platinum models
- An available 12.3-inch all-digital cluster displays important vehicle information and uses 3D animated graphics to display drive mode selections
- A suite of Ford Co-Pilot360™ driver-assist technologies is standard across the Explorer lineup
- Standard FordPass Connect™ gives 4G LTE Wi-Fi access to the entire vehicle



NEW 2020 EXPLORER



VIN 388

MODEL

2020 Explorer Platinum 4WD

EXTERIOR COLOR

Rich Copper

INTERIOR COLOR

Ebony leather

ENGINE

3.0-liter EcoBoost V6

TRANSMISSION

10-speed automatic

OPTIONS

- Equipment group 600A
- Rich Copper Metallic
- 21" premium aluminum wheels
- Premium technology package
 - Multicontour seats with Active Motion®
 - 10.1-inch LCD capacitive portrait touch screen with swipe and pinch-to-zoom capability
 - 980-watt, 14-speaker B&O sound system

AVAILABILITY

Summer 2019

BASE MSRP

\$58,250

PRICE AS EQUIPPED

\$61,330*

**Includes \$1,095 destination and delivery*

HIGHLIGHTS



- 3.0-liter EcoBoost® engine produces 365 horsepower and 380 lb.-ft. of torque
- Rear-wheel-drive architecture enables improved towing capability, up to 5,600 pounds when properly equipped
- Selectable drive mode system includes seven modes with Normal, Sport, Trail, Slippery, Tow/Haul, Eco, and Deep Snow/Sand conditions



- All-new Explorer retains classic design cues, that have made Explorer the best-selling SUV ever
- New Explorer features the most comfortable, quietest Explorer cabin ever
- Explorer Platinum includes a standard twin-panel moonroof
- Explorer offers seven wheel designs, including 21-inch premium aluminum wheels available on Platinum models
- Michelin Selfseal® tires are standard on Platinum models



- A 14-speaker B&O premium audio system and a wireless phone charging pad are standard on Platinum models
- An available 12.3-inch all-digital cluster displays important vehicle information and uses 3D animated graphics to display drive mode selections
- A suite of Ford Co-Pilot360™ driver-assist technologies is standard across the Explorer lineup
- Standard FordPass Connect™ gives 4G LTE Wi-Fi access to the entire vehicle



NEW 2020 EXPLORER



VIN 389

MODEL

2020 Explorer Platinum 4WD

EXTERIOR COLOR

Rich Copper

INTERIOR COLOR

Ebony leather

ENGINE

3.0-liter EcoBoost V6

TRANSMISSION

10-speed automatic

OPTIONS

- Equipment group 600A
- Rich Copper Metallic
- 21" premium aluminum wheels
- Premium technology package
 - Multicontour seats with Active Motion®
 - 10.1-inch LCD capacitive portrait touch screen with swipe and pinch-to-zoom capability
 - 980-watt, 14-speaker B&O sound system

AVAILABILITY

Summer 2019

BASE MSRP

\$58,250

PRICE AS EQUIPPED

\$61,330*

**Includes \$1,095 destination and delivery*

HIGHLIGHTS



- 3.0-liter EcoBoost® engine produces 365 horsepower and 380 lb.-ft. of torque
- Rear-wheel-drive architecture enables improved towing capability, up to 5,600 pounds when properly equipped
- Selectable drive mode system includes seven modes with Normal, Sport, Trail, Slippery, Tow/Haul, Eco, and Deep Snow/Sand conditions



- All-new Explorer retains classic design cues, that have made Explorer the best-selling SUV ever
- New Explorer features the most comfortable, quietest Explorer cabin ever
- Explorer Platinum includes a standard twin-panel moonroof
- Explorer offers seven wheel designs, including 21-inch premium aluminum wheels available on Platinum models
- Michelin Selfseal® tires are standard on Platinum models



- A 14-speaker B&O premium audio system and a wireless phone charging pad are standard on Platinum models
- An available 12.3-inch all-digital cluster displays important vehicle information and uses 3D animated graphics to display drive mode selections
- A suite of Ford Co-Pilot360™ driver-assist technologies is standard across the Explorer lineup
- Standard FordPass Connect™ gives 4G LTE Wi-Fi access to the entire vehicle



NEW 2020 EXPLORER



VIN 390

MODEL

2020 Explorer Platinum 4WD

EXTERIOR COLOR

Rich Copper

INTERIOR COLOR

Ebony leather

ENGINE

3.0-liter EcoBoost V6

TRANSMISSION

10-speed automatic

OPTIONS

- Equipment group 600A
- Rich Copper Metallic
- 21" premium aluminum wheels
- Premium technology package
 - Multicontour seats with Active Motion®
 - 10.1-inch LCD capacitive portrait touch screen with swipe and pinch-to-zoom capability
 - 980-watt, 14-speaker B&O sound system

AVAILABILITY

Summer 2019

BASE MSRP

\$58,250

PRICE AS EQUIPPED

\$61,330*

**Includes \$1,095 destination and delivery*

HIGHLIGHTS



- 3.0-liter EcoBoost® engine produces 365 horsepower and 380 lb.-ft. of torque
- Rear-wheel-drive architecture enables improved towing capability, up to 5,600 pounds when properly equipped
- Selectable drive mode system includes seven modes with Normal, Sport, Trail, Slippery, Tow/Haul, Eco, and Deep Snow/Sand conditions



- All-new Explorer retains classic design cues, that have made Explorer the best-selling SUV ever
- New Explorer features the most comfortable, quietest Explorer cabin ever
- Explorer Platinum includes a standard twin-panel moonroof
- Explorer offers seven wheel designs, including 21-inch premium aluminum wheels available on Platinum models
- Michelin Selfseal® tires are standard on Platinum models



- A 14-speaker B&O premium audio system and a wireless phone charging pad are standard on Platinum models
- An available 12.3-inch all-digital cluster displays important vehicle information and uses 3D animated graphics to display drive mode selections
- A suite of Ford Co-Pilot360™ driver-assist technologies is standard across the Explorer lineup
- Standard FordPass Connect™ gives 4G LTE Wi-Fi access to the entire vehicle



NEW 2020 EXPLORER



VIN 391

MODEL

2020 Explorer Platinum 4WD

EXTERIOR COLOR

Rich Copper

INTERIOR COLOR

Ebony leather

ENGINE

3.0-liter EcoBoost V6

TRANSMISSION

10-speed automatic

OPTIONS

- Equipment group 600A
- Rich Copper Metallic
- 21" premium aluminum wheels
- Premium technology package
 - Multicontour seats with Active Motion®
 - 10.1-inch LCD capacitive portrait touch screen with swipe and pinch-to-zoom capability
 - 980-watt, 14-speaker B&O sound system

AVAILABILITY

Summer 2019

BASE MSRP

\$58,250

PRICE AS EQUIPPED

\$61,330*

**Includes \$1,095 destination and delivery*



- 3.0-liter EcoBoost® engine produces 365 horsepower and 380 lb.-ft. of torque
- Rear-wheel-drive architecture enables improved towing capability, up to 5,600 pounds when properly equipped
- Selectable drive mode system includes seven modes with Normal, Sport, Trail, Slippery, Tow/Haul, Eco, and Deep Snow/Sand conditions



- All-new Explorer retains classic design cues, that have made Explorer the best-selling SUV ever
- New Explorer features the most comfortable, quietest Explorer cabin ever
- Explorer Platinum includes a standard twin-panel moonroof
- Explorer offers seven wheel designs, including 21-inch premium aluminum wheels available on Platinum models
- Michelin Selfseal® tires are standard on Platinum models



- A 14-speaker B&O premium audio system and a wireless phone charging pad are standard on Platinum models
- An available 12.3-inch all-digital cluster displays important vehicle information and uses 3D animated graphics to display drive mode selections
- A suite of Ford Co-Pilot360™ driver-assist technologies is standard across the Explorer lineup
- Standard FordPass Connect™ gives 4G LTE Wi-Fi access to the entire vehicle



NEW 2020 EXPLORER



VIN 392

MODEL

2020 Explorer Platinum 4WD

EXTERIOR COLOR

Rich Copper

INTERIOR COLOR

Ebony leather

ENGINE

3.0-liter EcoBoost V6

TRANSMISSION

10-speed automatic

OPTIONS

- Equipment group 600A
- Rich Copper Metallic
- 21" premium aluminum wheels
- Premium technology package
 - Multicontour seats with Active Motion®
 - 10.1-inch LCD capacitive portrait touch screen with swipe and pinch-to-zoom capability
 - 980-watt, 14-speaker B&O sound system

AVAILABILITY

Summer 2019

BASE MSRP

\$58,250

PRICE AS EQUIPPED

\$61,330*

**Includes \$1,095 destination and delivery*



- 3.0-liter EcoBoost® engine produces 365 horsepower and 380 lb.-ft. of torque
- Rear-wheel-drive architecture enables improved towing capability, up to 5,600 pounds when properly equipped
- Selectable drive mode system includes seven modes with Normal, Sport, Trail, Slippery, Tow/Haul, Eco, and Deep Snow/Sand conditions



- All-new Explorer retains classic design cues, that have made Explorer the best-selling SUV ever
- New Explorer features the most comfortable, quietest Explorer cabin ever
- Explorer Platinum includes a standard twin-panel moonroof
- Explorer offers seven wheel designs, including 21-inch premium aluminum wheels available on Platinum models
- Michelin Selfseal® tires are standard on Platinum models



- A 14-speaker B&O premium audio system and a wireless phone charging pad are standard on Platinum models
- An available 12.3-inch all-digital cluster displays important vehicle information and uses 3D animated graphics to display drive mode selections
- A suite of Ford Co-Pilot360™ driver-assist technologies is standard across the Explorer lineup
- Standard FordPass Connect™ gives 4G LTE Wi-Fi access to the entire vehicle



ALL-NEW 2020 EXPLORER ST



VIN 368

MODEL

2020 Explorer ST 4WD

EXTERIOR COLOR

Atlas Blue

INTERIOR COLOR

Ebony leather

ENGINE

3.0-liter EcoBoost V6

TRANSMISSION

10-speed automatic

OPTIONS

- Equipment group 400A
- Twin-panel moonroof
- Premium technology package
 - Multicontour seats with Active Motion®
 - 10.1-inch LCD capacitive portrait touch screen with swipe and pinch-to-zoom capability
 - 980-watt, 14-speaker B&O sound system

ST street pack

- 21" aluminum wheels
- Performance brakes
- Red painted performance front and rear brake calipers

AVAILABILITY

Summer 2019

BASE MSRP

\$54,740

PRICE AS EQUIPPED

\$59,520*

**Includes \$1,095 destination*

HIGHLIGHTS



- 3.0-liter EcoBoost® engine is specially tuned to produce 400 horsepower and 465 lb.-ft. of torque
- The newest SUV from Ford Performance is expected to reach a targeted top speed of 143 mph
- Quick-shifting 10-speed automatic transmission, sport-tuned suspension and standard four-wheel drive with selectable traction control give Explorer ST drivers an exhilarating on-road experience



- All-new ST model retains classic design cues that have made Explorer the best-selling SUV ever
- Explorer ST stands out courtesy of black mesh grille insert, liftgate appliqué, lower bodyside details, roof-rack side rails and skid plate elements
- Explorer ST comes standard with 20-inch machined aluminum wheels; 21-inch aluminum wheels are available
- Explorer ST comes standard with Class III trailer tow package



- A 14-speaker B&O premium audio system and a wireless phone charging pad are standard on ST models
- A 12.3-inch all-digital cluster is standard, displaying important vehicle information and uses 3D animated graphics to display drive mode selections
- A suite of Ford Co-Pilot360™ driver-assist technologies is standard across the Explorer lineup
- Standard FordPass Connect™ gives 4G LTE Wi-Fi access to the entire vehicle



ALL-NEW 2020 EXPLORER ST



VIN 369

MODEL

2020 Explorer ST 4WD

EXTERIOR COLOR

Atlas Blue

INTERIOR COLOR

Ebony leather

ENGINE

3.0-liter EcoBoost V6

TRANSMISSION

10-speed automatic

OPTIONS

- Equipment group 400A
- Twin-panel moonroof
- Premium technology package
 - Multicontour seats with Active Motion®
 - 10.1-inch LCD capacitive portrait touch screen with swipe and pinch-to-zoom capability
 - 980-watt, 14-speaker B&O sound system

ST street pack

- 21" aluminum wheels
- Performance brakes
- Red painted performance front and rear brake calipers

AVAILABILITY

Summer 2019

BASE MSRP

\$54,740

PRICE AS EQUIPPED

\$59,520*

**Includes \$1,095 destination*

HIGHLIGHTS



- 3.0-liter EcoBoost® engine is specially tuned to produce 400 horsepower and 465 lb.-ft. of torque
- The newest SUV from Ford Performance is expected to reach a targeted top speed of 143 mph
- Quick-shifting 10-speed automatic transmission, sport-tuned suspension and standard four-wheel drive with selectable traction control give Explorer ST drivers an exhilarating on-road experience



- All-new ST model retains classic design cues that have made Explorer the best-selling SUV ever
- Explorer ST stands out courtesy of black mesh grille insert, liftgate appliqué, lower bodyside details, roof-rack side rails and skid plate elements
- Explorer ST comes standard with 20-inch machined aluminum wheels; 21-inch aluminum wheels are available
- Explorer ST comes standard with Class III trailer tow package



- A 14-speaker B&O premium audio system and a wireless phone charging pad are standard on ST models
- A 12.3-inch all-digital cluster is standard, displaying important vehicle information and uses 3D animated graphics to display drive mode selections
- A suite of Ford Co-Pilot360™ driver-assist technologies is standard across the Explorer lineup
- Standard FordPass Connect™ gives 4G LTE Wi-Fi access to the entire vehicle



ALL-NEW 2020 EXPLORER ST



VIN 370

MODEL

2020 Explorer ST 4WD

EXTERIOR COLOR

Atlas Blue

INTERIOR COLOR

Ebony leather

ENGINE

3.0-liter EcoBoost V6

TRANSMISSION

10-speed automatic

OPTIONS

- Equipment group 400A
- Twin-panel moonroof
- Premium technology package
 - Multicontour seats with Active Motion®
 - 10.1-inch LCD capacitive portrait touch screen with swipe and pinch-to-zoom capability
 - 980-watt, 14-speaker B&O sound system

ST street pack

- 21" aluminum wheels
- Performance brakes
- Red painted performance front and rear brake calipers

AVAILABILITY

Summer 2019

BASE MSRP

\$54,740

PRICE AS EQUIPPED

\$59,520*

**Includes \$1,095 destination*



HIGHLIGHTS



- 3.0-liter EcoBoost® engine is specially tuned to produce 400 horsepower and 465 lb.-ft. of torque
- The newest SUV from Ford Performance is expected to reach a targeted top speed of 143 mph
- Quick-shifting 10-speed automatic transmission, sport-tuned suspension and standard four-wheel drive with selectable traction control give Explorer ST drivers an exhilarating on-road experience



- All-new ST model retains classic design cues that have made Explorer the best-selling SUV ever
- Explorer ST stands out courtesy of black mesh grille insert, liftgate appliqué, lower bodyside details, roof-rack side rails and skid plate elements
- Explorer ST comes standard with 20-inch machined aluminum wheels; 21-inch aluminum wheels are available
- Explorer ST comes standard with Class III trailer tow package



- A 14-speaker B&O premium audio system and a wireless phone charging pad are standard on ST models
- A 12.3-inch all-digital cluster is standard, displaying important vehicle information and uses 3D animated graphics to display drive mode selections
- A suite of Ford Co-Pilot360™ driver-assist technologies is standard across the Explorer lineup
- Standard FordPass Connect™ gives 4G LTE Wi-Fi access to the entire vehicle

ALL-NEW 2020 EXPLORER ST



VIN 371

MODEL

2020 Explorer ST 4WD

EXTERIOR COLOR

Atlas Blue

INTERIOR COLOR

Ebony leather

ENGINE

3.0-liter EcoBoost V6

TRANSMISSION

10-speed automatic

OPTIONS

- Equipment group 400A
- Twin-panel moonroof
- Premium technology package
 - Multicontour seats with Active Motion®
 - 10.1-inch LCD capacitive portrait touch screen with swipe and pinch-to-zoom capability
 - 980-watt, 14-speaker B&O sound system

ST street pack

- 21" aluminum wheels
- Performance brakes
- Red painted performance front and rear brake calipers

AVAILABILITY

Summer 2019

BASE MSRP

\$54,740

PRICE AS EQUIPPED

\$59,520*

**Includes \$1,095 destination*

HIGHLIGHTS



- 3.0-liter EcoBoost® engine is specially tuned to produce 400 horsepower and 465 lb.-ft. of torque
- The newest SUV from Ford Performance is expected to reach a targeted top speed of 143 mph
- Quick-shifting 10-speed automatic transmission, sport-tuned suspension and standard four-wheel drive with selectable traction control give Explorer ST drivers an exhilarating on-road experience



- All-new ST model retains classic design cues that have made Explorer the best-selling SUV ever
- Explorer ST stands out courtesy of black mesh grille insert, liftgate appliqué, lower bodyside details, roof-rack side rails and skid plate elements
- Explorer ST comes standard with 20-inch machined aluminum wheels; 21-inch aluminum wheels are available
- Explorer ST comes standard with Class III trailer tow package



- A 14-speaker B&O premium audio system and a wireless phone charging pad are standard on ST models
- A 12.3-inch all-digital cluster is standard, displaying important vehicle information and uses 3D animated graphics to display drive mode selections
- A suite of Ford Co-Pilot360™ driver-assist technologies is standard across the Explorer lineup
- Standard FordPass Connect™ gives 4G LTE Wi-Fi access to the entire vehicle



ALL-NEW 2020 EXPLORER ST



VIN 372

MODEL

2020 Explorer ST 4WD

EXTERIOR COLOR

Atlas Blue

INTERIOR COLOR

Ebony leather

ENGINE

3.0-liter EcoBoost V6

TRANSMISSION

10-speed automatic

OPTIONS

- Equipment group 400A
- Twin-panel moonroof
- Premium technology package
 - Multicontour seats with Active Motion®
 - 10.1-inch LCD capacitive portrait touch screen with swipe and pinch-to-zoom capability
 - 980-watt, 14-speaker B&O sound system

ST street pack

- 21" aluminum wheels
- Performance brakes
- Red painted performance front and rear brake calipers

AVAILABILITY

Summer 2019

BASE MSRP

\$54,740

PRICE AS EQUIPPED

\$59,520*

**Includes \$1,095 destination*

HIGHLIGHTS



- 3.0-liter EcoBoost® engine is specially tuned to produce 400 horsepower and 465 lb.-ft. of torque
- The newest SUV from Ford Performance is expected to reach a targeted top speed of 143 mph
- Quick-shifting 10-speed automatic transmission, sport-tuned suspension and standard four-wheel drive with selectable traction control give Explorer ST drivers an exhilarating on-road experience



- All-new ST model retains classic design cues that have made Explorer the best-selling SUV ever
- Explorer ST stands out courtesy of black mesh grille insert, liftgate appliqué, lower bodyside details, roof-rack side rails and skid plate elements
- Explorer ST comes standard with 20-inch machined aluminum wheels; 21-inch aluminum wheels are available
- Explorer ST comes standard with Class III trailer tow package



- A 14-speaker B&O premium audio system and a wireless phone charging pad are standard on ST models
- A 12.3-inch all-digital cluster is standard, displaying important vehicle information and uses 3D animated graphics to display drive mode selections
- A suite of Ford Co-Pilot360™ driver-assist technologies is standard across the Explorer lineup
- Standard FordPass Connect™ gives 4G LTE Wi-Fi access to the entire vehicle



ALL-NEW 2020 EXPLORER ST



VIN 373

MODEL

2020 Explorer ST 4WD

EXTERIOR COLOR

Rapid Red

INTERIOR COLOR

Ebony leather

ENGINE

3.0-liter EcoBoost V6

TRANSMISSION

10-speed automatic

OPTIONS

- Equipment group 400A
- Rapid Red
- Twin-panel moonroof
- Premium technology package
 - Multicontour seats with Active Motion®
 - 10.1-inch LCD capacitive portrait touch screen with swipe and pinch-to-zoom capability
 - 980-watt, 14-speaker B&O sound system

· ST street pack

- 21" aluminum wheels
- Performance brakes
- Red painted performance front and rear brake calipers

AVAILABILITY

Summer 2019

BASE MSRP

\$54,740

PRICE AS EQUIPPED

\$59,915*

**Includes \$1,095 destination*

HIGHLIGHTS



- 3.0-liter EcoBoost® engine is specially tuned to produce 400 horsepower and 465 lb.-ft. of torque
- The newest SUV from Ford Performance is expected to reach a targeted top speed of 143 mph
- Quick-shifting 10-speed automatic transmission, sport-tuned suspension and standard four-wheel drive with selectable traction control give Explorer ST drivers an exhilarating on-road experience



- All-new ST model retains classic design cues that have made Explorer the best-selling SUV ever
- Explorer ST stands out courtesy of black mesh grille insert, liftgate appliqué, lower bodyside details, roof-rack side rails and skid plate elements
- Explorer ST comes standard with 20-inch machined aluminum wheels; 21-inch aluminum wheels are available
- Explorer ST comes standard with Class III trailer tow package



- A 14-speaker B&O premium audio system and a wireless phone charging pad are standard on ST models
- A 12.3-inch all-digital cluster is standard, displaying important vehicle information and uses 3D animated graphics to display drive mode selections
- A suite of Ford Co-Pilot360™ driver-assist technologies is standard across the Explorer lineup
- Standard FordPass Connect™ gives 4G LTE Wi-Fi access to the entire vehicle



ALL-NEW 2020 EXPLORER ST



VIN 374

MODEL

2020 Explorer ST 4WD

EXTERIOR COLOR

Rapid Red

INTERIOR COLOR

Ebony leather

ENGINE

3.0-liter EcoBoost V6

TRANSMISSION

10-speed automatic

OPTIONS

- Equipment group 400A
- Rapid Red
- Twin-panel moonroof
- Premium technology package
 - Multicontour seats with Active Motion®
 - 10.1-inch LCD capacitive portrait touch screen with swipe and pinch-to-zoom capability
 - 980-watt, 14-speaker B&O sound system

· ST street pack

- 21" aluminum wheels
- Performance brakes
- Red painted performance front and rear brake calipers

AVAILABILITY

Summer 2019

BASE MSRP

\$54,740

PRICE AS EQUIPPED

\$59,915*

**Includes \$1,095 destination*

HIGHLIGHTS



- 3.0-liter EcoBoost® engine is specially tuned to produce 400 horsepower and 465 lb.-ft. of torque
- The newest SUV from Ford Performance is expected to reach a targeted top speed of 143 mph
- Quick-shifting 10-speed automatic transmission, sport-tuned suspension and standard four-wheel drive with selectable traction control give Explorer ST drivers an exhilarating on-road experience



- All-new ST model retains classic design cues that have made Explorer the best-selling SUV ever
- Explorer ST stands out courtesy of black mesh grille insert, liftgate appliqué, lower bodyside details, roof-rack side rails and skid plate elements
- Explorer ST comes standard with 20-inch machined aluminum wheels; 21-inch aluminum wheels are available
- Explorer ST comes standard with Class III trailer tow package



- A 14-speaker B&O premium audio system and a wireless phone charging pad are standard on ST models
- A 12.3-inch all-digital cluster is standard, displaying important vehicle information and uses 3D animated graphics to display drive mode selections
- A suite of Ford Co-Pilot360™ driver-assist technologies is standard across the Explorer lineup
- Standard FordPass Connect™ gives 4G LTE Wi-Fi access to the entire vehicle



ALL-NEW 2020 EXPLORER ST



VIN 375

MODEL

2020 Explorer ST 4WD

EXTERIOR COLOR

Rapid Red

INTERIOR COLOR

Ebony leather

ENGINE

3.0-liter EcoBoost V6

TRANSMISSION

10-speed automatic

OPTIONS

- Equipment group 400A
- Rapid Red
- Twin-panel moonroof
- Premium technology package
 - Multicontour seats with Active Motion®
 - 10.1-inch LCD capacitive portrait touch screen with swipe and pinch-to-zoom capability
 - 980-watt, 14-speaker B&O sound system

· ST street pack

- 21" aluminum wheels
- Performance brakes
- Red painted performance front and rear brake calipers

AVAILABILITY

Summer 2019

BASE MSRP

\$54,740

PRICE AS EQUIPPED

\$59,915*

**Includes \$1,095 destination*



- 3.0-liter EcoBoost® engine is specially tuned to produce 400 horsepower and 465 lb.-ft. of torque
- The newest SUV from Ford Performance is expected to reach a targeted top speed of 143 mph
- Quick-shifting 10-speed automatic transmission, sport-tuned suspension and standard four-wheel drive with selectable traction control give Explorer ST drivers an exhilarating on-road experience



- All-new ST model retains classic design cues that have made Explorer the best-selling SUV ever
- Explorer ST stands out courtesy of black mesh grille insert, liftgate appliqué, lower bodyside details, roof-rack side rails and skid plate elements
- Explorer ST comes standard with 20-inch machined aluminum wheels; 21-inch aluminum wheels are available
- Explorer ST comes standard with Class III trailer tow package



- A 14-speaker B&O premium audio system and a wireless phone charging pad are standard on ST models
- A 12.3-inch all-digital cluster is standard, displaying important vehicle information and uses 3D animated graphics to display drive mode selections
- A suite of Ford Co-Pilot360™ driver-assist technologies is standard across the Explorer lineup
- Standard FordPass Connect™ gives 4G LTE Wi-Fi access to the entire vehicle



ALL-NEW 2020 EXPLORER ST



VIN 376

MODEL

2020 Explorer ST 4WD

EXTERIOR COLOR

Rapid Red

INTERIOR COLOR

Ebony leather

ENGINE

3.0-liter EcoBoost V6

TRANSMISSION

10-speed automatic

OPTIONS

- Equipment group 400A
- Rapid Red
- Twin-panel moonroof
- Premium technology package
- ST street pack
 - 21" aluminum wheels
 - Performance brakes
 - Red painted performance front and rear brake calipers

- Multicontour seats with Active Motion®
- 10.1-inch LCD capacitive portrait touch screen with swipe and pinch-to-zoom capability
- 980-watt, 14-speaker B&O sound system

AVAILABILITY

Summer 2019

BASE MSRP

\$54,740

PRICE AS EQUIPPED

\$59,915*

**Includes \$1,095 destination*

HIGHLIGHTS



- 3.0-liter EcoBoost® engine is specially tuned to produce 400 horsepower and 465 lb.-ft. of torque
- The newest SUV from Ford Performance is expected to reach a targeted top speed of 143 mph
- Quick-shifting 10-speed automatic transmission, sport-tuned suspension and standard four-wheel drive with selectable traction control give Explorer ST drivers an exhilarating on-road experience



- All-new ST model retains classic design cues that have made Explorer the best-selling SUV ever
- Explorer ST stands out courtesy of black mesh grille insert, liftgate appliqué, lower bodyside details, roof-rack side rails and skid plate elements
- Explorer ST comes standard with 20-inch machined aluminum wheels; 21-inch aluminum wheels are available
- Explorer ST comes standard with Class III trailer tow package



- A 14-speaker B&O premium audio system and a wireless phone charging pad are standard on ST models
- A 12.3-inch all-digital cluster is standard, displaying important vehicle information and uses 3D animated graphics to display drive mode selections
- A suite of Ford Co-Pilot360™ driver-assist technologies is standard across the Explorer lineup
- Standard FordPass Connect™ gives 4G LTE Wi-Fi access to the entire vehicle



ALL-NEW 2020 EXPLORER ST



VIN 377

MODEL

2020 Explorer ST 4WD

EXTERIOR COLOR

Rapid Red

INTERIOR COLOR

Ebony leather

ENGINE

3.0-liter EcoBoost V6

TRANSMISSION

10-speed automatic

OPTIONS

- Equipment group 400A
- Rapid Red
- Twin-panel moonroof
- Premium technology package
- Multicontour seats with Active Motion®
- 10.1-inch LCD capacitive portrait touch screen with swipe and pinch-to-zoom capability
- 980-watt, 14-speaker B&O sound system

ST street pack

- 21" aluminum wheels
- Performance brakes
- Red painted performance front and rear brake calipers

AVAILABILITY

Summer 2019

BASE MSRP

\$54,740

PRICE AS EQUIPPED

\$59,915*

**Includes \$1,095 destination*



- 3.0-liter EcoBoost® engine is specially tuned to produce 400 horsepower and 465 lb.-ft. of torque
- The newest SUV from Ford Performance is expected to reach a targeted top speed of 143 mph
- Quick-shifting 10-speed automatic transmission, sport-tuned suspension and standard four-wheel drive with selectable traction control give Explorer ST drivers an exhilarating on-road experience



- All-new ST model retains classic design cues that have made Explorer the best-selling SUV ever
- Explorer ST stands out courtesy of black mesh grille insert, liftgate appliqué, lower bodyside details, roof-rack side rails and skid plate elements
- Explorer ST comes standard with 20-inch machined aluminum wheels; 21-inch aluminum wheels are available
- Explorer ST comes standard with Class III trailer tow package



- A 14-speaker B&O premium audio system and a wireless phone charging pad are standard on ST models
- A 12.3-inch all-digital cluster is standard, displaying important vehicle information and uses 3D animated graphics to display drive mode selections
- A suite of Ford Co-Pilot360™ driver-assist technologies is standard across the Explorer lineup
- Standard FordPass Connect™ gives 4G LTE Wi-Fi access to the entire vehicle



ALL-NEW 2020 EXPLORER ST



VIN 378

MODEL

2020 Explorer ST 4WD

EXTERIOR COLOR

Iconic Silver

INTERIOR COLOR

Ebony leather

ENGINE

3.0-liter EcoBoost V6

TRANSMISSION

10-speed automatic

OPTIONS

- Equipment group 400A
- Twin-panel moonroof
- Premium technology package
 - Multicontour seats with Active Motion®
 - 10.1-inch LCD capacitive portrait touch screen with swipe and pinch-to-zoom capability
 - 980-watt, 14-speaker B&O sound system

ST street pack

- 21" aluminum wheels
- Performance brakes
- Red painted performance front and rear brake calipers

AVAILABILITY

Summer 2019

BASE MSRP

\$54,740

PRICE AS EQUIPPED

\$59,520*

**Includes \$1,095 destination*

HIGHLIGHTS



- 3.0-liter EcoBoost® engine is specially tuned to produce 400 horsepower and 465 lb.-ft. of torque
- The newest SUV from Ford Performance is expected to reach a targeted top speed of 143 mph
- Quick-shifting 10-speed automatic transmission, sport-tuned suspension and standard four-wheel drive with selectable traction control give Explorer ST drivers an exhilarating on-road experience



- All-new ST model retains classic design cues that have made Explorer the best-selling SUV ever
- Explorer ST stands out courtesy of black mesh grille insert, liftgate appliqué, lower bodyside details, roof-rack side rails and skid plate elements
- Explorer ST comes standard with 20-inch machined aluminum wheels; 21-inch aluminum wheels are available
- Explorer ST comes standard with Class III trailer tow package



- A 14-speaker B&O premium audio system and a wireless phone charging pad are standard on ST models
- A 12.3-inch all-digital cluster is standard, displaying important vehicle information and uses 3D animated graphics to display drive mode selections
- A suite of Ford Co-Pilot360™ driver-assist technologies is standard across the Explorer lineup
- Standard FordPass Connect™ gives 4G LTE Wi-Fi access to the entire vehicle



ALL-NEW 2020 EXPLORER ST



VIN 379

MODEL

2020 Explorer ST 4WD

EXTERIOR COLOR

Iconic Silver

INTERIOR COLOR

Ebony leather

ENGINE

3.0-liter EcoBoost V6

TRANSMISSION

10-speed automatic

OPTIONS

- Equipment group 400A
- Twin-panel moonroof
- Premium technology package
 - Multicontour seats with Active Motion®
 - 10.1-inch LCD capacitive portrait touch screen with swipe and pinch-to-zoom capability
 - 980-watt, 14-speaker B&O sound system

ST street pack

- 21" aluminum wheels
- Performance brakes
- Red painted performance front and rear brake calipers

AVAILABILITY

Summer 2019

BASE MSRP

\$54,740

PRICE AS EQUIPPED

\$59,520*

**Includes \$1,095 destination*



- 3.0-liter EcoBoost® engine is specially tuned to produce 400 horsepower and 465 lb.-ft. of torque
- The newest SUV from Ford Performance is expected to reach a targeted top speed of 143 mph
- Quick-shifting 10-speed automatic transmission, sport-tuned suspension and standard four-wheel drive with selectable traction control give Explorer ST drivers an exhilarating on-road experience



- All-new ST model retains classic design cues that have made Explorer the best-selling SUV ever
- Explorer ST stands out courtesy of black mesh grille insert, liftgate appliqué, lower bodyside details, roof-rack side rails and skid plate elements
- Explorer ST comes standard with 20-inch machined aluminum wheels; 21-inch aluminum wheels are available
- Explorer ST comes standard with Class III trailer tow package



- A 14-speaker B&O premium audio system and a wireless phone charging pad are standard on ST models
- A 12.3-inch all-digital cluster is standard, displaying important vehicle information and uses 3D animated graphics to display drive mode selections
- A suite of Ford Co-Pilot360™ driver-assist technologies is standard across the Explorer lineup
- Standard FordPass Connect™ gives 4G LTE Wi-Fi access to the entire vehicle



ALL-NEW 2020 EXPLORER ST



VIN 380

MODEL

2020 Explorer ST 4WD

EXTERIOR COLOR

Iconic Silver

INTERIOR COLOR

Ebony leather

ENGINE

3.0-liter EcoBoost V6

TRANSMISSION

10-speed automatic

OPTIONS

- Equipment group 400A
- Twin-panel moonroof
- Premium technology package
 - Multicontour seats with Active Motion®
 - 10.1-inch LCD capacitive portrait touch screen with swipe and pinch-to-zoom capability
 - 980-watt, 14-speaker B&O sound system

ST street pack

- 21" aluminum wheels
- Performance brakes
- Red painted performance front and rear brake calipers

AVAILABILITY

Summer 2019

BASE MSRP

\$54,740

PRICE AS EQUIPPED

\$59,520*

**Includes \$1,095 destination*

HIGHLIGHTS



- 3.0-liter EcoBoost® engine is specially tuned to produce 400 horsepower and 465 lb.-ft. of torque
- The newest SUV from Ford Performance is expected to reach a targeted top speed of 143 mph
- Quick-shifting 10-speed automatic transmission, sport-tuned suspension and standard four-wheel drive with selectable traction control give Explorer ST drivers an exhilarating on-road experience



- All-new ST model retains classic design cues that have made Explorer the best-selling SUV ever
- Explorer ST stands out courtesy of black mesh grille insert, liftgate appliqué, lower bodyside details, roof-rack side rails and skid plate elements
- Explorer ST comes standard with 20-inch machined aluminum wheels; 21-inch aluminum wheels are available
- Explorer ST comes standard with Class III trailer tow package



- A 14-speaker B&O premium audio system and a wireless phone charging pad are standard on ST models
- A 12.3-inch all-digital cluster is standard, displaying important vehicle information and uses 3D animated graphics to display drive mode selections
- A suite of Ford Co-Pilot360™ driver-assist technologies is standard across the Explorer lineup
- Standard FordPass Connect™ gives 4G LTE Wi-Fi access to the entire vehicle



ALL-NEW 2020 EXPLORER ST



VIN 381

MODEL

2020 Explorer ST 4WD

EXTERIOR COLOR

Iconic Silver

INTERIOR COLOR

Ebony leather

ENGINE

3.0-liter EcoBoost V6

TRANSMISSION

10-speed automatic

OPTIONS

- Equipment group 400A
- Twin-panel moonroof
- Premium technology package
 - Multicontour seats with Active Motion®
 - 10.1-inch LCD capacitive portrait touch screen with swipe and pinch-to-zoom capability
 - 980-watt, 14-speaker B&O sound system

ST street pack

- 21" aluminum wheels
- Performance brakes
- Red painted performance front and rear brake calipers

AVAILABILITY

Summer 2019

BASE MSRP

\$54,740

PRICE AS EQUIPPED

\$59,520*

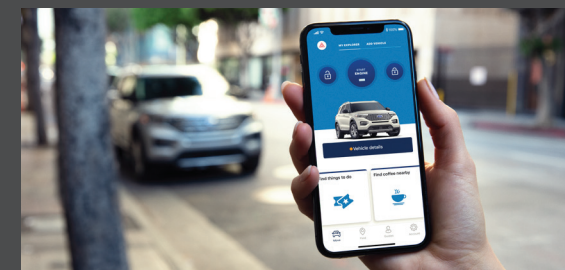
**Includes \$1,095 destination*



- 3.0-liter EcoBoost® engine is specially tuned to produce 400 horsepower and 465 lb.-ft. of torque
- The newest SUV from Ford Performance is expected to reach a targeted top speed of 143 mph
- Quick-shifting 10-speed automatic transmission, sport-tuned suspension and standard four-wheel drive with selectable traction control give Explorer ST drivers an exhilarating on-road experience



- All-new ST model retains classic design cues that have made Explorer the best-selling SUV ever
- Explorer ST stands out courtesy of black mesh grille insert, liftgate appliqué, lower bodyside details, roof-rack side rails and skid plate elements
- Explorer ST comes standard with 20-inch machined aluminum wheels; 21-inch aluminum wheels are available
- Explorer ST comes standard with Class III trailer tow package



- A 14-speaker B&O premium audio system and a wireless phone charging pad are standard on ST models
- A 12.3-inch all-digital cluster is standard, displaying important vehicle information and uses 3D animated graphics to display drive mode selections
- A suite of Ford Co-Pilot360™ driver-assist technologies is standard across the Explorer lineup
- Standard FordPass Connect™ gives 4G LTE Wi-Fi access to the entire vehicle



ALL-NEW 2020 EXPLORER ST



VIN 382

MODEL

2020 Explorer ST 4WD

EXTERIOR COLOR

Iconic Silver

INTERIOR COLOR

Ebony leather

ENGINE

3.0-liter EcoBoost V6

TRANSMISSION

10-speed automatic

OPTIONS

- Equipment group 400A
- Twin-panel moonroof
- Premium technology package
 - Multicontour seats with Active Motion®
 - 10.1-inch LCD capacitive portrait touch screen with swipe and pinch-to-zoom capability
 - 980-watt, 14-speaker B&O sound system

ST street pack

- 21" aluminum wheels
- Performance brakes
- Red painted performance front and rear brake calipers

AVAILABILITY

Summer 2019

BASE MSRP

\$54,740

PRICE AS EQUIPPED

\$59,520*

**Includes \$1,095 destination*

HIGHLIGHTS



- 3.0-liter EcoBoost® engine is specially tuned to produce 400 horsepower and 465 lb.-ft. of torque
- The newest SUV from Ford Performance is expected to reach a targeted top speed of 143 mph
- Quick-shifting 10-speed automatic transmission, sport-tuned suspension and standard four-wheel drive with selectable traction control give Explorer ST drivers an exhilarating on-road experience



- All-new ST model retains classic design cues that have made Explorer the best-selling SUV ever
- Explorer ST stands out courtesy of black mesh grille insert, liftgate appliqué, lower bodyside details, roof-rack side rails and skid plate elements
- Explorer ST comes standard with 20-inch machined aluminum wheels; 21-inch aluminum wheels are available
- Explorer ST comes standard with Class III trailer tow package



- A 14-speaker B&O premium audio system and a wireless phone charging pad are standard on ST models
- A 12.3-inch all-digital cluster is standard, displaying important vehicle information and uses 3D animated graphics to display drive mode selections
- A suite of Ford Co-Pilot360™ driver-assist technologies is standard across the Explorer lineup
- Standard FordPass Connect™ gives 4G LTE Wi-Fi access to the entire vehicle

